

Light Bar Lens Replacement Guide

Thank you for your purchase of the Stage Series LED Light Bar! This guide describes the extra installation process required if you would like to change one of the inner lenses on your light bar.

Please note: If you choose to change the lens yourself, any warranty claim for moisture or condensation will require the light bar to be returned to our facility for repair, rather than direct replacement. If you wish, you may ship the light bar to us, and we can assist with any lens change you would like to make.

Tools Needed: 2mm hex bit, hex driver, rubber gloves



1. Wearing gloves, place the light bar face-up on a padded, clean surface. To avoid dust and humidity, complete this process indoors, in an air-conditioned room.

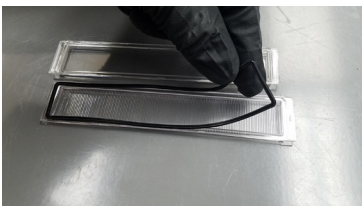


2. Using a 2mm hex bit and hex driver, remove the eight screws securing the frame to the light bar. Be careful to leave the frame in place as you work, removing the screws only.



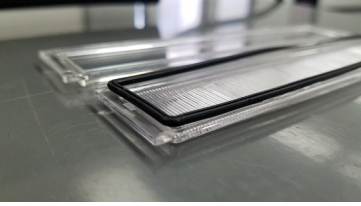
3. When all screws are removed, take your new replacement lens and unwrap it carefully, wearing gloves. Examine to ensure there are no dust or particles on the inside of the lens. Place on clean surface.

4. Slowly remove the frame from the light bar, leaving the lens in place. Keep the frame in the same orientation, and set to the side, on a clean surface.



5. Remove the original lens. Carefully remove the gasket in the inside groove.

6. Place the gasket onto the new lens. Do not press from one side to the other- align the ends, and then work your way towards the middle.



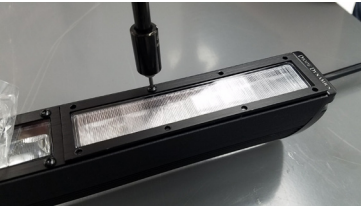
7. Once the gasket is aligned, push down gently to secure the gasket to the lens. It does not need to be pushed in all the way, only enough to stay in place. Again, do this on both ends, and then work your way to the middle. Inspect when finished to make sure the gasket is uniformly installed.



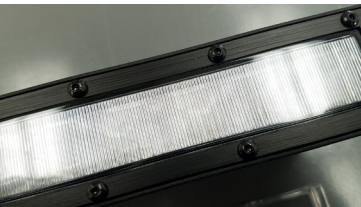
8. Carefully place the lens with gasket back in place on the light bar. If you drop the lens, re-inspect the gasket to make sure it is still aligned properly.



9. Pick up the frame, and place it back on the new lens, in the same orientation that it was originally installed.



10. Check the side-to-side positioning. There should be an equal gap on both sides.



11. When you are confident in the position, install the first screw, one of the middle screws. Do not tighten fully. If the screw does not twist easily, you are most likely not aligned with the original threading. Reposition and try again.

12. Move diagonally, installing the second screw. Again, do not tighten fully. Like a wheel on a car, it is important to install the frame with uniform pressure, or one side may lift up and misalign the gasket.

13. Work your way around, installing the rest of the screws and then tighten. Do not overtighten - they should be firm, but not forced.

Please contact **Diode Dynamics** should you have any questions about the installation process, at **314-205-3033** (9a-5p CST) or **contact@diodedynamics.com**.