

Wiring Instructions

8. Connect the LED Board connector to the RGBW Driver. Next, take the bare wires from the RGBW Driver and connect them to the RGBW Controller. All wires must be inserted into the corresponding slot on the controller in order for the boards to work (i.e. white wire inserted into the white slot, etc.). See diagram below.



IMPORTANT: DO NOT plug the LED panel directly into controller without the driver. The LEDs must be plugged into driver first to control the power.

9. Connect your RGBW controller to 12V power and ground. This will dictate when the panels turn on. The most popular wiring choice is listed in the table below.

DD WIRE	PIN	DRIVER WIRE	PASSENGER WIRE
RED *	PIN 9 - PARKING	GREEN	BLUE
BLACK	PIN 10 - GROUND	BLACK	BLACK

*second RED wire is not used

10. Mount drivers and controller, and tuck all wires. Drivers should be mounted outside of headlight for serviceability, in a location away from the engine block to avoid excessive heat buildup.

11. Test thoroughly, reseal headlight, and reinstall onto vehicle.

NEED MORE HELP?

Scan the QR code to link to our installation video online!

We've taken the time to test our products on your vehicle. We can guarantee compatibility and fitment the first time – no guessing game! If you need more help with installation, watch our step-by-step video to walk you through the process.

YouTube



Please contact **Diode Dynamics** should you have any questions about the installation or wiring process, at **314-205-3033** (9a-5p CST) or **contact@diodedynamics.com**.

Visit **www.diodedynamics.com** to find more products for any vehicle.

**100% SATISFACTION
GUARANTEE**

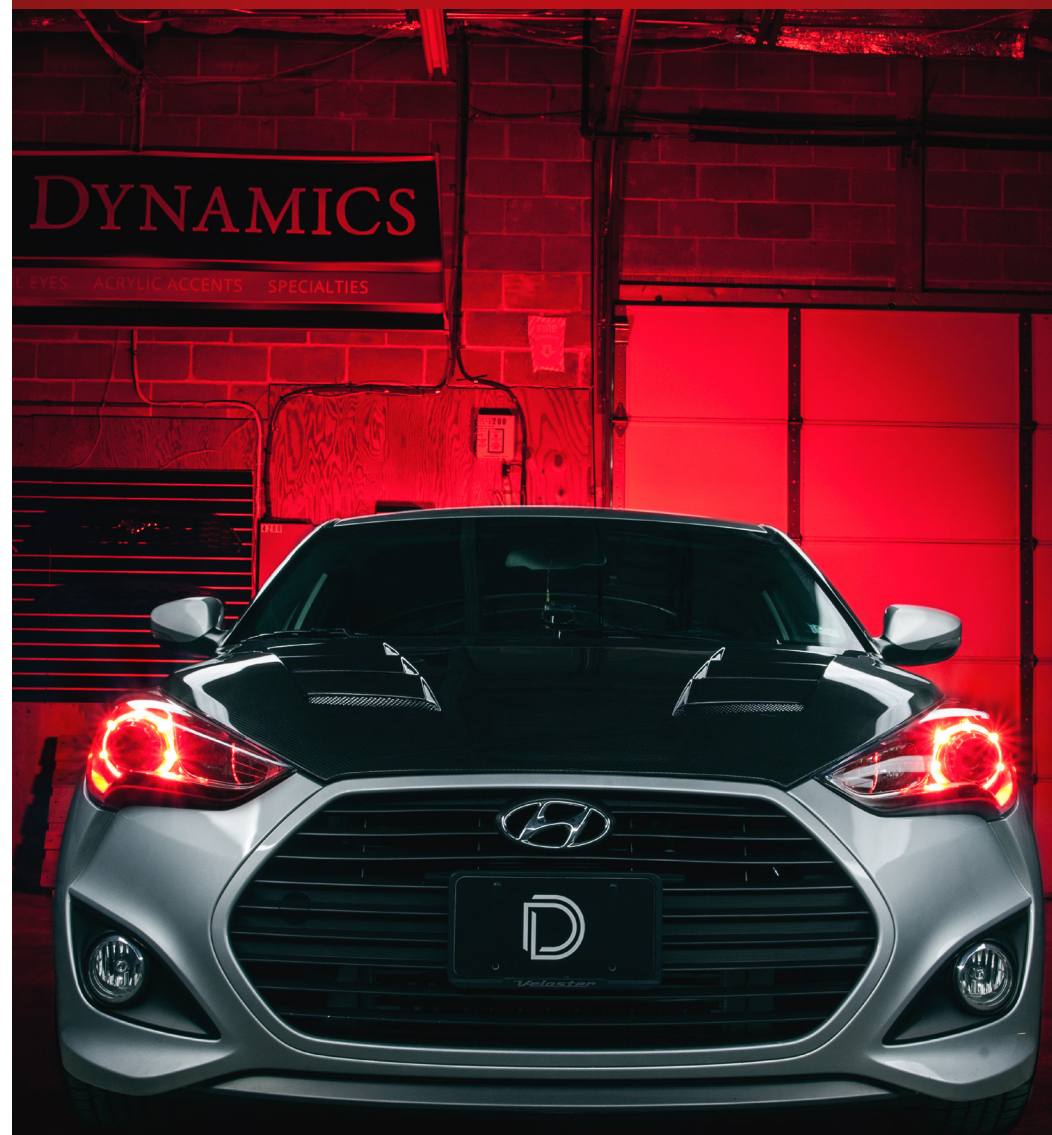
**3 YEAR
WARRANTY**



DIODE DYNAMICS

PERFORMANCE LIGHTING TECHNOLOGY

2012+ Hyundai Veloster Turbo RGBW™ DRL LED Board Installation Guide



DIODE DYNAMICS

2012+ Hyundai Veloster Turbo

RGBW™ DRL LED Board Installation Guide

Thank you for your purchase of this unique product for your new Hyundai Veloster Turbo! With these boards, you will be able to convert your factory white LED DRL inside the headlight into full multicolor functionality. They are a direct replacement for the factory LED panels inside the light.

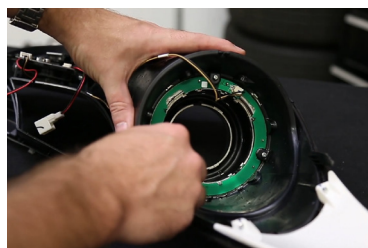


Please note: Headlights must be opened before proceeding with installation. Professional installation is strongly recommended. Please contact Diode Dynamics if you need assistance locating an installer.

Tools Needed: Torx Screwdriver



1. Remove the lens. Then remove the main bezel and unclip the factory connector. Set the headlamp assembly aside.



2. Next, remove the three screws holding the factory board in place.



3. Push the shroud through the bezel to pop it out.



3 YEAR
WARRANTY

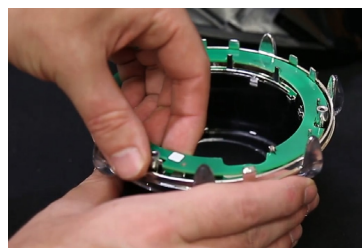


[WATCH THE INSTALLATION VIDEO ONLINE!](#)

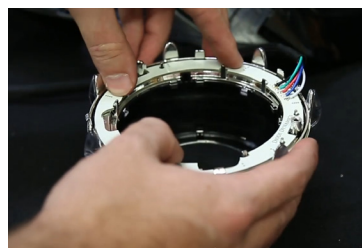
Scan the QR code on page 3



4. Next, unclip the small connector on the factory board. Set the bezel assembly aside.



5. Pull straight up on the factory board to remove it from the shroud.



6. Using the alignment notches, place your Diode Dynamics board in place. Next, replace the shroud in the main bezel and clip into place. Ensure the wiring is on the upper left hand side when looking at the front of the assembly. Replace the original screws.



7. Reinstall the main bezel back in the headlamp housing. Run the RGBW ribbon cable out of the headlamp, sealing any holes that you may create. Replace the headlamp lens and repeat for the other side.

See back for further instructions.