

Wiring Instructions

8. First, connect the board connector to the Switchback driver output. Connect the Switchback driver input to the pigtail. Finally, tap the bare wires to the wiring harness. See Wiring Method Diagram below. **The black wire must be grounded before any function will work.**



DD WIRE	PIN	DRIVER WIRE	PASSENGER WIRE
WHITE	PIN 2 - PARKING	WHITE/BROWN	WHITE/ORANGE
RED	PIN 4 - DRL	WHITE/YELLOW	WHITE/DARK BLUE
YELLOW	PIN 12 - TURN SIGNAL	WHITE/GREEN	WHITE/TAN
BLACK	PIN 9 - GROUND	BLACK	BLACK
BLUE	PIN 14 - FAULT SENSE	BROWN	ORANGE

IMPORTANT: DO NOT plug the LED panel directly into pigtail without the driver. The LEDs must be plugged into driver first to control the power.

9. Mount driver and tuck all wires. Driver should be mounted outside of headlight for serviceability, in a location away from the engine block to avoid excessive heat buildup.

10. Test thoroughly, reseal headlight and reinstall onto vehicle.

NEED MORE HELP?

Scan the QR code to link to our installation video online!

We've taken the time to test our products on your vehicle. We can guarantee compatibility and fitment the first time – no guessing game! If you need more help with installation, watch our step-by-step video to walk you through the process.

YouTube



Please contact **Diode Dynamics** should you have any questions about the installation or wiring process, at **314-205-3033** (9a-5p CST) or **contact@diodedynamics.com**.

Visit **www.diodedynamics.com** to find more products for any vehicle.

100% SATISFACTION
GUARANTEE

3 YEAR
WARRANTY



DIODE DYNAMICS

PERFORMANCE LIGHTING TECHNOLOGY

2013+ Dodge Ram Switchback LED Board Installation Guide



DIODE DYNAMICS

2013+ Dodge Ram Switchback LED Board Installation Guide

Thank you for your purchase of this unique product for your Dodge Ram with projector headlamps! With these modules, you will be able to convert your factory amber LEDs inside the headlight into a white running light, along with an amber turn signal feature. They are a direct replacement for the factory LED panels inside the light.



**3 YEAR
WARRANTY**



Please note: Headlights must be opened before proceeding with installation. Professional installation is strongly recommended. Please contact Diode Dynamics if you need assistance locating an installer.

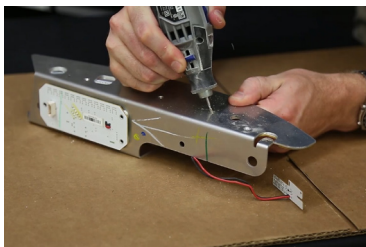
Tools Needed: Torx T10 Screwdriver, Dremel Rotary Tool, Wire Cutter



1. Access the factory LED panels by removing the screws holding the turn signal assembly in place. Remove the chrome reflector unit by depressing the clip on the back of the driver.



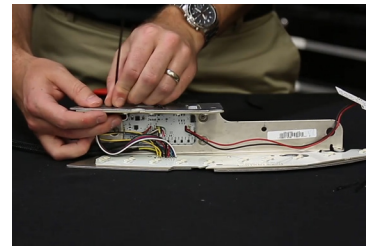
2. Then, remove the torx screws holding the metal bracket to the chrome reflector. Once complete, separate the chrome reflector from the metal bracket. Bring the metal bracket to a clean area away from the chrome reflector.



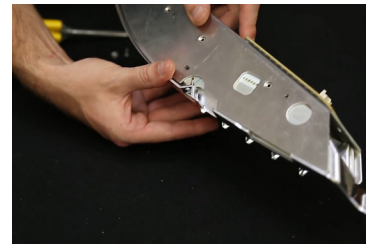
3. Remove the factory LED board from the metal bracket. Remove the metal rivets holding the LED panel to the turn signal housing with a rotary (Dremel) tool. Panels should fall off.



4. Using a wire cutter, cut the wires from factory driver board and remove the panels. If the boards do not easily fall off, make sure to remove any metal burrs that may still be holding them on. You may leave factory driver and sidemarker in place.



5. Place the new Diode Dynamics LED boards into position on the metal bracket. All holes should align perfectly. Adjust if holes do not line up. Use sturdy twist-ties (included) to fasten boards in place, by passing them through the holes where the metal rivets were. We do not recommend adhesives, as they may fail over time.



6. Reinstall chrome reflector to housing. Using the alignment notches, be sure to align properly and push gently back into position. Do not use excessive force. If the reflector is misaligned, there is chance of damaging the LEDs. Once complete, replace the torx screws.



7. Reinstall turn signal housing into main headlamp housing. Run the switchback ribbon cable out of headlamp, along with the 2-wire connector, sealing any holes that you may create. If desired, plug the sidemarker into the factory driver board. Using the alignment pins, set the unit into place. Once complete, replace the torx screws and headlamp lens.

DIODE DYNAMICS

2013+ Dodge Ram Switchback LED Board Installation Guide



[WATCH THE INSTALLATION VIDEO ONLINE!](#)

Scan the QR code on page 3

See back for further instructions.