

Kit Includes: One (1) or Two (2) LED Pods, Deutsch-style wire pigtail, mounting bracket, and hardware



Features

- Advanced TIR (total internal reflection) optics
- High intensity LED chips
- Back-lighting available in white, amber, red, and white*
- Durable powdercoated aluminum construction
- Integrated Deutsch-style connector
- Pin fin heatsink design

*The yellow lens option is only available with an amber backlight

Specifications

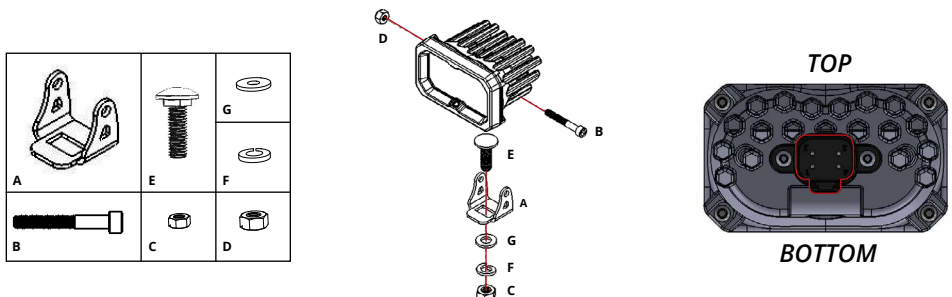
- Input Voltage: 9-16V
- Input Power: 7.7 watts (SSC2 Sport)
25.6 watts (SSC2 Pro)
- Current Draw: 0.6 amps @ 12.8V (SSC2 Sport)
2 amps @ 12.8V (SSC2 Pro)
- Operating Temperature: -40° to 185°F
- Weight: 1.1 lbs (single), 1.65 lbs (pair)

Wiring

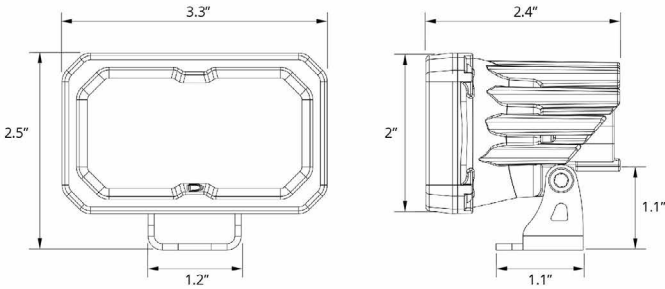
Connect the red wire to positive supply, and black wire to negative or common ground. Tap the blue wire for the backlight to your desired vehicle function. If you are using the pigtail, the yellow wire won't be used. **Please note:** This auxiliary lamp draws high current, and requires adequately-sized wiring for safe operation. If you are not using a Diode Dynamics wire harness, use wire sized 16 AWG or larger for main power and ground. Use wire sized 18 AWG or larger for the backlight (blue wire on the pigtail). Please be mindful of current ratings and wire size, especially if splitting power signals to multiple pods, or using switches. If you have any questions, please feel free to contact us for assistance.

Mounting

If you wish, you may use the included hardware to mount your pod. Fasteners are included. We recommend drilling a 3/8" hole to allow flush fitment of the bracket. The most common mounting style is shown below. Stage Series Pods are also compatible with most standard mounting brackets on the market.



Dimensions

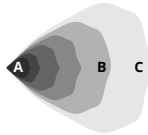
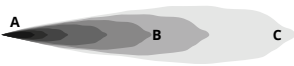


Output

Driving 

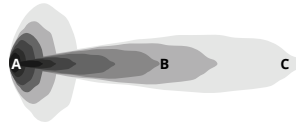
Fog/Wide 

Flood



Spot

Combo



A - lux at 10 meters
 B - Distance (m) with 1 lux
 C - Distance (m) with .25 lux

		SS _{C2} SPORT				SS _{C2} PRO				
		A	B	C			A	B	C	
Lens Color/Optics	cd*	Illuminance (lx)	Distance (m)	SKU	cd*	Illuminance (lx)	Distance (m)	SKU		
White Combo	16,000	160	126	250	DD6387	27,000	270	164	330	DD6408
White Driving	37,500	375	194	390	DD6381	59,000	590	243	490	DD6402
White Flood	375	4	19	40	DD6392	700	7	26	50	DD6413
White Fog	5,000	50	71	140	DD6384	8,500	85	92	180	DD6405
White Spot	91,000	910	302	600	DD6397	97,000	970	311	620	DD6418
Yellow Combo	13,500	135	116	230	DD6391	24,000	240	155	310	DD6412
Yellow Driving	27,000	270	164	330	DD6383	46,000	460	214	430	DD6404
Yellow Flood	315	3	18	40	DD6396	650	7	25	50	DD6417
Yellow Fog	4,400	44	66	130	DD6386	7,500	75	87	170	DD6407
Yellow Spot	60,000	600	245	490	DD6401	84,000	840	290	580	DD6422
* PEAK BEAM INTENSITY Measured Output Output Color White 870 lumens White 6000K Cool White Yellow 780 lumens Yellow 3000K Selective Yellow					* PEAK BEAM INTENSITY Measured Output Output Color White 1,990 lumens White 6000K Cool White Yellow 1,860 lumens Yellow 3000K Selective Yellow					