

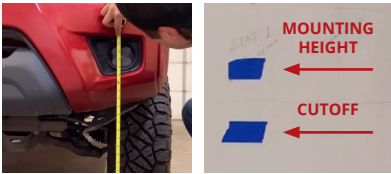
Below are instructions on how to aim your SS3 Fog Light Kit. In general, fog lamps should be angled slightly downwards to illuminate the area directly in front of your vehicle.

Please contact us if you have any questions.



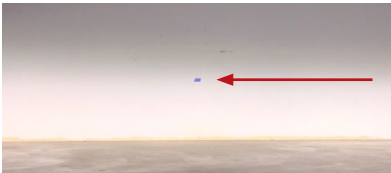
1. Park your vehicle 25 feet away from a wall or garage door on a level surface.

2. Loosen the 5/32" allen bolts on each side of your SS3 pod, just enough to allow you to adjust the pod.



3. On your vehicle, measure the distance between the ground and the center of your SS3 pod. This is your mounting height.

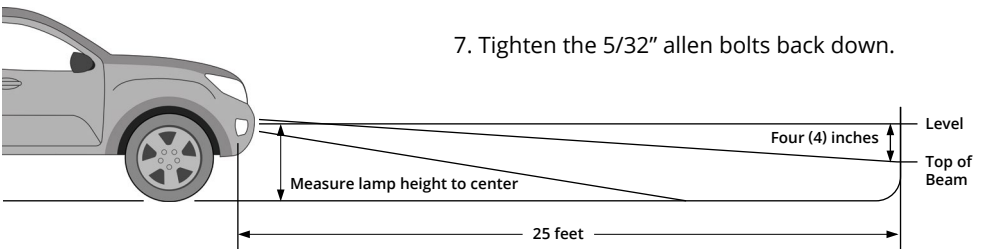
4. Mark the mounting height on the wall or garage door using tape.



5. Add another piece of tape four inches below the mounting height. This is your fog light cutoff line.

6. Aim your SS3 pods on each side, so that the top of the beam pattern is on the cutoff line mark.

7. Tighten the 5/32" allen bolts back down.



Please contact **Diode Dynamics** should you have any questions about the installation or wiring process, at **314-205-3033** (10a-5p CST) or **contact@diodedynamics.com**.