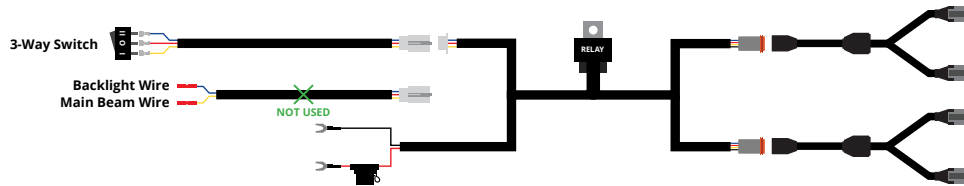


Wiring Instructions

PP0217



15. Route the included wiring harness to the general locations as needed. Place the Relay near the fuse box, under your hood. Run the output wires to your LED pods. We recommend routing the harness behind the drivers side headlight to the battery. If you would like to control the lights with a toggle switch, route the Switch wire into the vehicle cabin, on the driver's side.

Connect the positive and negative battery wires to the battery, or to the main power terminals near the fuse box.

Then identify a mounting point for the switch in an unused area of the dash, and mount in place.

If you purchased a 4-pod kit, connect the output wire from the harness to each splitter.

Then, connect either the output wire from the harness or the splitter to each pod.

16. Loosely set the bumper in place and check the fitment of your SS5 pods. If contact occurs, adjust the pods so they sit further back in the slots.

17. Adjust and aim the SS5 pods as desired and then tighten. Reverse steps 1 through 7 to reinstall the bumper and complete the installation.

Please contact **Diode Dynamics** should you have any questions about the installation or wiring process, at **314-205-3033** (10a-5p CST) or **contact@diodedynamics.com**.

NEED MORE HELP?

Scan the QR code to link to our installation video online!

We've taken the time to test our products on your vehicle. We can guarantee compatibility and fitment the first time – no guessing game! If you need more help with installation, watch our step-by-step video to walk you through the process.

YouTube



This installation guide is for the following SKUs:

Toyota 4Runner 2014 SS5 Stealth Grille Bracket Kit (**DD7550**)
Toyota 4Runner 2014 SS5 Stealth Grille LED 2-Pod Kit, White Combo (**DD7534** Sport, **DD7536** Pro)
Toyota 4Runner 2014 SS5 Stealth Grille LED 2-Pod Kit, Yellow Combo (**DD7535** Sport, **DD7537** Pro)
Toyota 4Runner 2014 SS5 Stealth Grille LED 2-Pod Kit, White Driving (**DD7538** Sport, **DD7540** Pro)
Toyota 4Runner 2014 SS5 Stealth Grille LED 2-Pod Kit, Yellow Driving (**DD7539** Sport, **DD7541** Pro)
Toyota 4Runner 2014 SS5 Stealth Grille LED 4-Pod Kit, White Combo (**DD7542** Sport, **DD7544** Pro)
Toyota 4Runner 2014 SS5 Stealth Grille LED 4-Pod Kit, Yellow Combo (**DD7543** Sport, **DD7545** Pro)
Toyota 4Runner 2014 SS5 Stealth Grille LED 4-Pod Kit, White Driving (**DD7546** Sport, **DD7548** Pro)
Toyota 4Runner 2014 SS5 Stealth Grille LED 4-Pod Kit, Yellow Driving (**DD7547** Sport, **DD7549** Pro)

STAGE
SERIES
RALLY-QUALIFIED LED LIGHTING

Toyota 4Runner

SS5 Stealth Grille LED Pod Kit



Thank you for your purchase of our new SS5 Stealth Grille LED Pod Kit. CAD-designed to use existing mounting points, this kit is compatible with the 2014+ Toyota 4Runner. Installation instructions are included below.



COMPUTER DESIGNED
OEM FITMENT

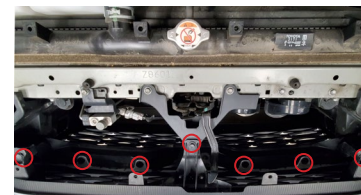
Please contact us if you have any questions.

Tools Needed: Trim removal tool, 5/16" ratchet, 10mm socket, 14mm socket, 4mm Allen key



1. With the hood popped, remove the thirteen push-rivets holding the core support trim panel in place. Push down in the center of each push-rivet and then use a plastic trim removal tool or flathead screwdriver to remove the push-rivet.

Reset the push-rivets upon removal by pushing the center section back through the top.



2. Using a trim removal tool or flathead screwdriver, remove the six plastic push-rivets from the top of the grille shown in the image to the left.

Then using a 10mm socket, remove the bolt in the center.



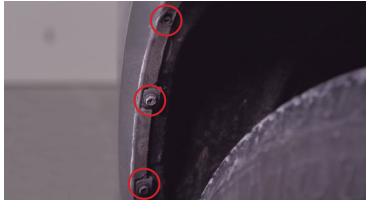
3. From underneath the vehicle, remove the six screws along the bottom of the bumper using a 10mm socket.

Then reach up from underneath the vehicle and disconnect the factory fog lights.

See inside for further instructions.



4. If equipped, disconnect the connector for the Toyota Safety Sense underneath the hood latch. Then remove the two 10mm bolts, securing the Toyota Safety Sense module to the vehicle.



5. On the passenger side of the vehicle, remove the three screws from the edge of the front bumper in the wheel well using a 10mm socket.

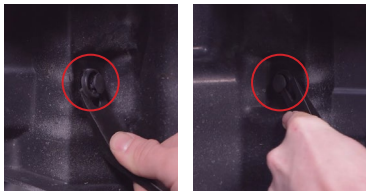


6. Using a trim removal tool, pull the upper edge of the bumper off the snap feature, and slide the lower two screw-clips off the bumper. Then pull the corner of the bumper away from the fender.

Repeat this step on the other side of the bumper.



7. With help from a second person, pull the bumper straight forward to release snaps around the headlights and remove the bumper. Set the bumper aside.



8. Using a trim removal tool, remove the plastic push-rivet from the air dams on both sides of the vehicle.

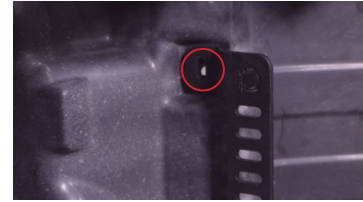
Do not remove the air dams.



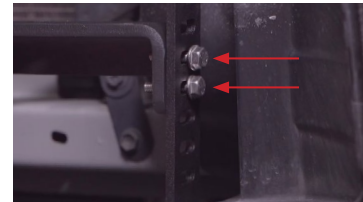
9. Using a 14mm socket, loosen the center bolt on the crash bar. Driver's side is shown in the picture to the left.



10. Slide the open slot of your new Diode Dynamics bracket under the bolt loosened in the previous step. The open slot portion of the brackets should be facing the outside of the vehicle, while the tab at the top of the bracket faces the inside of the vehicle.

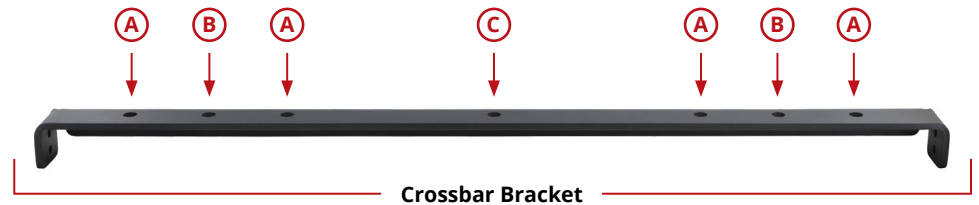


11. Loosely secure the brackets to the air dams with the provided M6 screw, washer, and nut.



12. Loosely secure the SS5 crossbar bracket in the 4th and 5th slotted holes from the bottom, centering it on the Stage Series brackets using the provided M6 bolts and nuts.

Tighten both the Stage Series bracket and the crossbar bracket hardware. Torque the 14mm bolt loosened in step 8 to 22 ft-lbs.



13. Loosely attach the SS5 universal brackets to the crossbar bracket using the included hardware. Recommended placements are listed below.

Four (4) SS5 Pods - Position A

Two (2) SS5 Pods - Position A or B

NOTE: If your vehicle did not come equipped with Toyota Safety Sense, an SS5 Pod can be mounted in Position C (sold separately).



14. Loosely secure each individual SS5 pod onto the previously installed universal brackets using the provided hardware.

See back for further instructions.