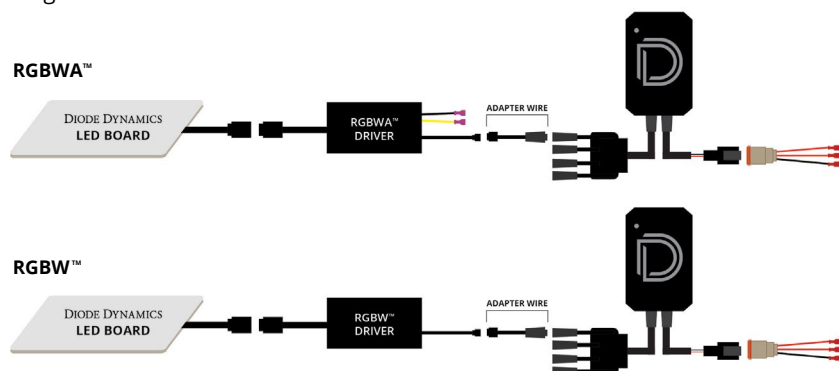
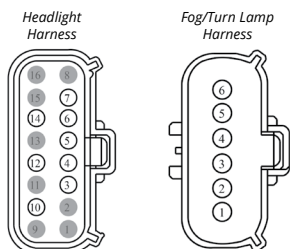


8. Connect the LED board to the driver. Then using the JST-to-M8 adapter wire included with the Diode Dynamics RGBW controller (sold separately), connect the driver to the controller. See diagram below.



**IMPORTANT: DO NOT plug the LED panel directly into controller without the driver. The LEDs must be plugged into driver first to control the power.**

9. Connect your RGBW controller to 12V power and ground. This will dictate when the panels turn on. The most popular wiring choice is listed in the table below.



DIODE WIRE	FUNCTION	CONNECTOR	PIN #	DRIVER WIRE	PASSENGER WIRE
RED	DRL	HEADLIGHT	4	WHITE/BLUE	PURPLE/WHITE
RED	PARKING	HEADLIGHT	5	PURPLE/WHITE	PURPLE/WHITE
YELLOW *	TURN SIGNAL	FOG/TURN LAMP	2	BLUE/GREEN	YELLOW/GREY
BLACK x2 **	GROUND	HEADLIGHT	8	BLACK/GREEN	BLACK/GREY

\* yellow wire for RGBWA™ module only

\*\* one black wire to driver and one for input to controller (if needed)

10. Mount drivers and controller, and tuck all wires. Drivers should be mounted outside of headlight for serviceability, in a location away from the engine block to avoid excessive heat buildup. Test thoroughly, reseal headlight, and reinstall onto vehicle.

### NEED MORE HELP?

Scan the QR code to link to our installation video online!

By taking the time to test our products on every vehicle make and model, we can guarantee compatibility and fitment the first time – no guessing game! Our step by step videos walk you through the process, making installation a breeze for the everyday automotive enthusiast!

YouTube



This installation guide is for the following SKU:

DD2243 Mustang 2018 RGBWA LED Boards USD/M  
DD2254 Mustang 2018 RGBWA LED Boards EU

DD2245 Mustang 2018 RGBW LED Boards USD/M/EU

# DIODE DYNAMICS

PERFORMANCE LIGHTING TECHNOLOGY

## 2018+ Ford Mustang Pro Series RGBW™ / RGBWA™ DRL LED Board Installation Guide





# DIODE DYNAMICS

## 2018+ Ford Mustang Pro Series

### RGBW™/RGBWA™ DRL LED Board Installation Guide

Thank you for your purchase of this unique product for your new Ford Mustang! With these LED boards, you will be able to convert your factory LED DRL “bars” inside the headlight into full multicolor functionality, along with a sequential amber turn signal feature.

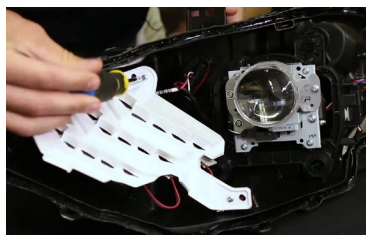


**Please note:** Headlights must be opened before proceeding with installation. Professional installation is strongly recommended. Please contact Diode Dynamics if you need assistance locating an installer.

**Tools Needed:** Cutting pliers, 5-minute Epoxy, and Phillips Screwdriver

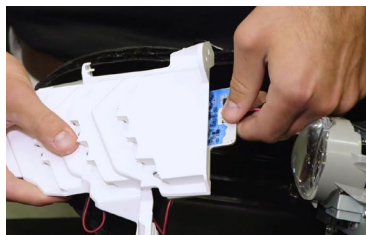


1. Open the headlight housing. To do so, remove the four screws holding the back of the headlight housing to the lens. Set the lens aside on a soft surface to avoid scratching or marring the surface.



2. Remove the three Phillips screws holding the white DRL bezel in place. Once the screws have been removed, pull the bezel away from the headlight housing.

**NOTE:** If you are installing these boards on an EU/AU spec Mustang, skip to Step 5.



3. Unplug the factory board connector and tuck it away. It won't be reused.

# DIODE DYNAMICS

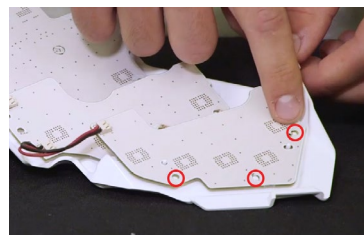
## 2018+ Ford Mustang Pro Series

### RGBW™/RGBWA™ DRL LED Board Installation Guide



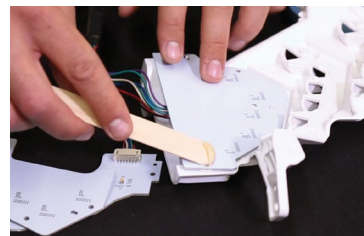
**[WATCH THE INSTALLATION VIDEO ONLINE!](#)**

Scan the QR code on page 3

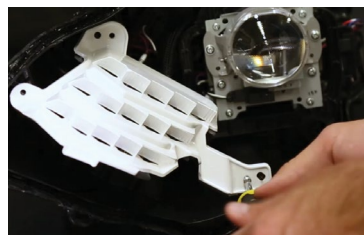


4. Bring the DRL bezel to a clean area. Using cutting pliers, remove the three plastic rivets holding each LED board to the bezel and remove the LED boards.

**NOTE:** Be sure not to remove the two mounting tabs. They will be needed to align your new LED boards.



5. Place your new Diode Dynamics LED boards into position. All holes should align perfectly. Secure the new boards in place by applying epoxy or other permanent adhesive where the plastic rivets were removed. The epoxy should create a bond between the plastic rivet mounting point and the board. Use enough epoxy so that there is a bond all the way around the rivet, contacting the board fully. We recommend securing the board labeled 3 first and working your way forward.



6. Once the epoxy is fully set, reinstall the white bezel to the main headlight housing using the original screws.



7. Run the wiring out of headlight, sealing any holes that you may create.

*See back for further instructions.*