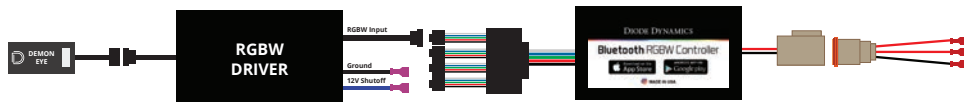


Wiring Instructions



9. Connect the Demon Eye to the Driver. Next, connect the Driver to your RGBW controller. Your controller should be powered to any 12V power source and ground. The most popular wiring choice for USDM models is listed in the table below.

IMPORTANT: DO NOT plug the LED panel directly into controller without the driver. The LEDs must be plugged into driver first to control the power.

10. Connect the **BLACK WIRE** from the driver to **GROUND** at all times for function.

11. The **BLUE WIRE** will shut the demon eyes off when connected to any 12V signal.

We strongly recommend connecting the blue wire to your headlight signal, so that the demon eye shuts off anytime your headlights are activated. This will prolong the life of your Demon Eyes by reducing exposure to high heat. To connect these wires, T-taps are included.

DD WIRE	PIN	DRIVER WIRE	PASSENGER WIRE
BLUE	PIN 1-LOW BEAM	BROWN/BLUE	BLUE/GREEN
RED*	PIN 3-DRL	GREY/PURPLE	GREY/PURPLE
BLACKx2	PIN 8-GROUND	BLACK/GREEN	BLACK/GREY

*The second red wire is not used.

NOTE: Wire colors listed are for USDM models only. The wire colors for EU/AU models will be different.

12. Mount the drivers and controller, and tuck all wires. Drivers should be mounted outside of headlight for serviceability, in a location away from the engine block to avoid excessive heat buildup.

13. Test thoroughly and reinstall onto vehicle.

NEED MORE HELP?

Scan the QR code to link to our installation video online!

We've taken the time to test our products on your vehicle. We can guarantee compatibility and fitment the first time – no guessing game! If you need more help with installation, watch our step-by-step video to walk you through the process.

YouTube



Visit www.diodedynamics.com to find more products for any vehicle.

100% SATISFACTION
GUARANTEE

3 YEAR
WARANTY

MADE IN
USA



DIODE DYNAMICS

PERFORMANCE LIGHTING TECHNOLOGY

2015-2017 Ford Mustang Demon Eye Kit Installation Guide

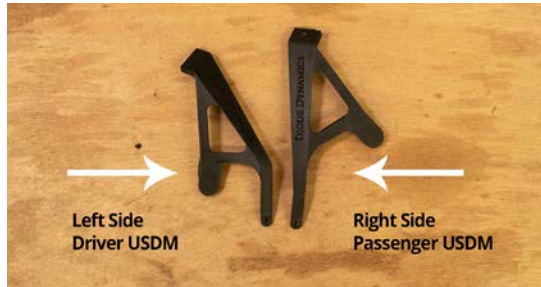


DIODE DYNAMICS

2015-2017 Ford Mustang Demon Eye Kit Installation Guide

Thank you for your purchase of this unique product for your Ford Mustang! Designed specifically for the 2015-2017 Ford Mustang, our Mustang Demon Eye Bracket Kit allows you to mount a demon eye inside your headlight without having to open it!

Tools Needed: Torx T20 Screwdriver, Phillips Screwdriver



1. Mount the Demon Eye to the bracket. Be sure the Demon Eye is facing out with the Diode Dynamics engraving on the bracket as shown in the picture to the left.



2. Remove the bumper and headlamp from the vehicle. Next, mount the demon eye in the headlamp. To do so, remove the 4 screws holding the HID ballast in place using a T20 Torx bit.

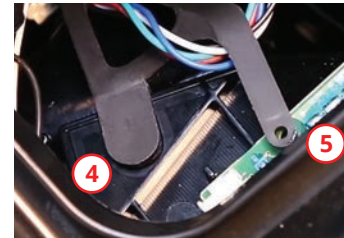


3. Unclip the HID connector and pull straight out on the HID ballast. Set it aside to provide enough working space to get inside in the headlamp. Then remove the Phillips screw holding the factory circuit board down.



[WATCH THE INSTALLATION VIDEO ONLINE!](#)

Scan the QR code on page 3



4. Place the bracket and Demon Eye into the projector housing. The pressure fitted tab should be placed in the lower hole and lock into place.

5. The hole on the Demon Eye bracket should be placed over the screw hole on the circuit board. See picture to the left.



6. Replace the original screw. Do not over tighten.



7. Route the Demon Eye wire out of the ballast opening before reconnecting and replacing the HID ballast using the original screws.

8. Repeat the process for the other headlamp.

See back for further instructions.