

DIODE DYNAMICS

PERFORMANCE LIGHTING TECHNOLOGY

2013-2014 Ford Mustang Switchback LED Board Installation Guide

Thank you for your purchase of this unique product for your Ford Mustang! With these modules, you will be able to convert your factory LEDs inside the headlight into a white running light, along with an amber turn signal. They are a direct replacement for the factory LED panels inside the light.



3 YEAR
WARRANTY



Please note: Headlights must be opened before proceeding with installation. Professional installation is strongly recommended. Please contact Diode Dynamics if you need assistance locating an installer.

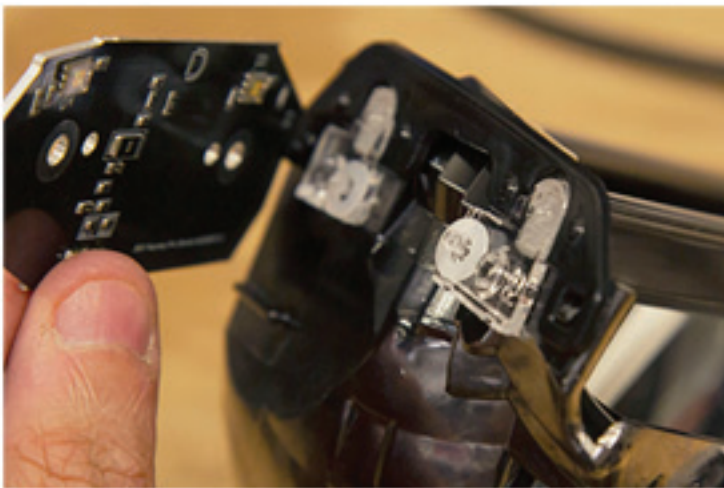
Tools Needed: Screwdriver



1. To begin, remove the screws holding the reflector housing in place and then unclip the wire connector.



2. Next, remove the two screws holding the LED board to the reflector housing and remove the factory LED board. The factory board and driver board will no longer be used.



3. Install your new Diode Dynamics LED board. To do so, install the supplied spacers between the board and the reflector housing as shown in the picture to the left. The spacers must be used in order to allow enough clearance for the LED chips.

Secure the boards in place using the original screws.

See back for further instructions.





4. Using the alignment tabs, reinstall the reflector housing in the headlamp housing, running the wiring through the dust cap and resealing any holes that you may create. Replace the lens and repeat for other headlamp.

Wiring Instructions

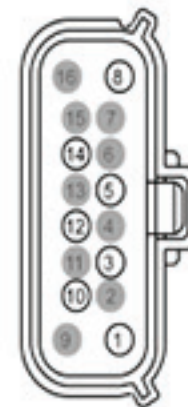
8. First, connect the board connector to the Switchback driver output. Connect the Switchback driver input to the pigtail. Finally, tap the bare wires to the wiring harness. See Wiring Method Diagram below. **The black wire must be grounded before any function will work.**



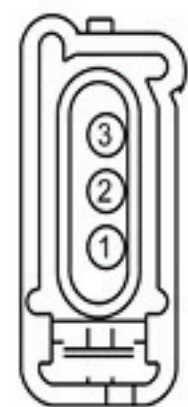
IMPORTANT: DO NOT plug the LED panel directly into pigtail without the driver. The LEDs must be plugged into driver first to control the power.

DD WIRE	PIN	HARNESS LOCATION	DRIVER WIRE	PASSENGER WIRE
RED	PIN 3 - DRL	HEADLIGHT	BROWN/ORANGE	GREY/ORANGE
WHITE	PIN 5 - PARKING	HEADLIGHT	VIOLET/WHITE	VIOLET/WHITE
BLACK	PIN 14 - GROUND	HEADLIGHT	BLACK/GREY	BLACK/YELLOW
YELLOW	PIN 3 - TURN SIGNAL	TURN SIGNAL	BLUE/GREEN	YELLOW/VIOLET

Headlight
Harness



Turn/Park
Harness



9. Mount driver and tuck all wires. **Driver should be mounted outside of headlight for serviceability, in a location away from the engine block to avoid excessive heat buildup.**

10. Test thoroughly, reseal headlight and reinstall onto vehicle.

NEED MORE HELP?

Scan the QR code to link to our installation video online!



We've taken the time to test our products on your vehicle. We can guarantee compatibility and fitment the first time – no guessing game! If you need more help with installation, watch our step-by-step video to walk you through the process.



This installation guide is for the following SKU:

DD2174 Mustang 2013 SB LED Boards