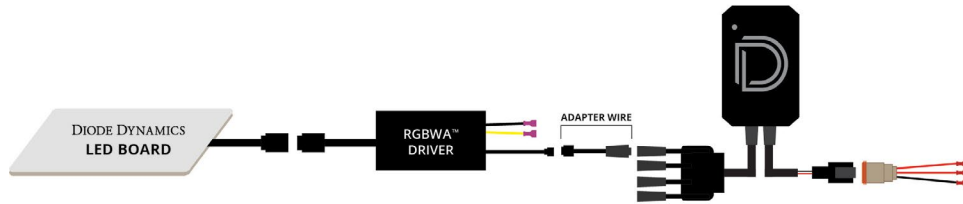


8. Connect the LED board to the driver. Then using the JST-to-M8 adapter wire included with the Diode Dynamics RGBW controller (sold separately), connect the driver to the controller. See diagram below.



IMPORTANT: DO NOT plug the LED panel directly into controller without the driver. The LEDs must be plugged into driver first to control the power.

9. Connect your RGBW controller to 12V power and ground. This will dictate when the panels turn on. The most popular wiring choice is listed in the table below.

DD WIRE	PIN	DRIVER WIRE	PASSENGER WIRE
RED	PIN 2 - PARKING	WHITE/BROWN	WHITE/ORANGE
RED	PIN 4 - DRL	WHITE/YELLOW	WHITE/DARK BLUE
YELLOW	PIN 12 - TURN SIGNAL	WHITE/GREEN	WHITE/TAN
BLACK x2	PIN 9 - GROUND	BLACK	BLACK
BLUE	PIN 14 - FAULT SENSE	BROWN	ORANGE

10. Mount drivers and controller, and tuck all wires. **Drivers should be mounted outside of headlight for serviceability, in a location away from the engine block to avoid excessive heat buildup.**

11. Test thoroughly, reseal headlight and reinstall onto vehicle.

NEED MORE HELP?

Scan the QR code to link to our installation video online!

We've taken the time to test our products on your vehicle. We can guarantee compatibility and fitment the first time - no guessing game! If you need more help with installation, watch our step-by-step video to walk you through the process.



Please contact **Diode Dynamics** should you have any questions about the installation or wiring process, at **314-205-3033** (10a-5p CST) or **contact@diodedynamics.com**.

100% SATISFACTION
GUARANTEE

3 YEAR
WARRANTY



DIODE DYNAMICS

PERFORMANCE LIGHTING TECHNOLOGY

2013+ Dodge Ram RGBW™ DRL LED Board Installation Guide



Thank you for your purchase of this unique product for your Dodge Ram with projector headlamps! With these modules, you will be able to convert your factory amber LEDs inside the headlight into full multicolor functionality, along with an amber turn signal feature. They are a direct replacement for the factory LED panels inside the light.

Please note: Headlights must be opened before proceeding with installation. Professional installation is strongly recommended. Please contact Diode Dynamics if you need assistance locating an installer.

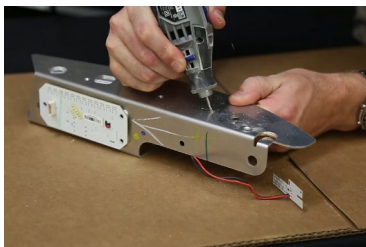
Tools Needed: Torx T10 Screwdriver, Dremel Rotary Tool, Wire Cutter



1. Access the factory LED panels by removing the screws holding the turn signal assembly in place. Remove the chrome reflector unit by depressing the clip on the back of the driver.



2. Then, remove the torx screws holding the metal bracket to the chrome reflector. Once complete, separate the chrome reflector from the metal bracket. Bring the metal bracket to a clean area away from the chrome reflector.



3. Remove the factory LED board from the metal bracket. Remove the metal rivets holding the LED panel to the turn signal housing with a rotary (Dremel) tool. Panels should fall off.



**3 YEAR
WARRANTY**

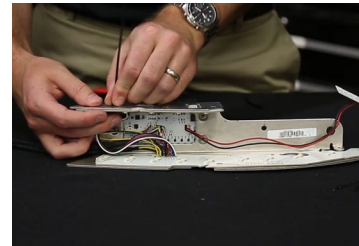


[WATCH THE INSTALLATION VIDEO ONLINE!](#)

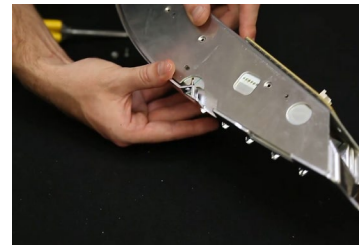
Scan the QR code on page 3



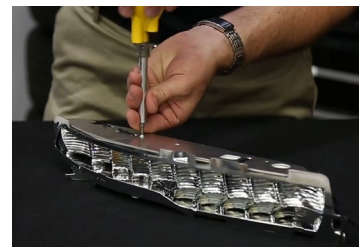
4. Using a wire cutter, cut the wires from factory driver board and remove the panels. If the boards do not easily fall off, make sure to remove any metal burrs that may still be holding them on. You may leave factory driver and sidemarker in place.



5. Place the new Diode Dynamics LED boards into position on the metal bracket. All holes should align perfectly. Adjust if holes do not line up. Use sturdy twist-ties (included) to fasten boards in place, by passing them through the holes where the metal rivets were. We do not recommend adhesives, as they may fail over time.



6. Reinstall chrome reflector to housing. Using the alignment notches, be sure to align properly and push gently back into position. Do not use excessive force. If the reflector is misaligned, there is chance of damaging the LEDs. Once complete, replace the torx screws.



7. Reinstall turn signal housing into main headlamp housing. Run RGBW ribbon cable out of headlamp, along with the 2-wire connector, sealing any holes that you may create. If desired, plug the sidemarker into the factory driver board. Using the alignment pins, set the unit into place. Once complete, replace the torx screws and headlamp lens.

See back for further instructions.