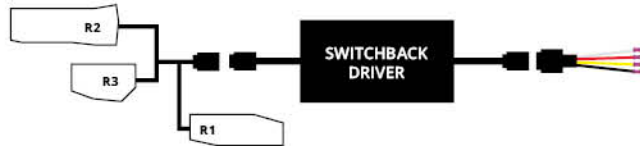
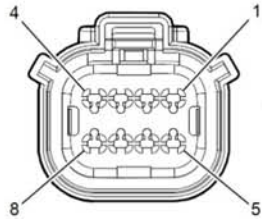


### Wiring Instructions

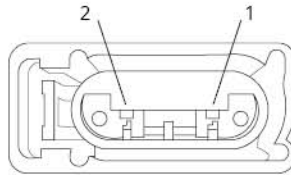
9. First, connect the boards to the Switchback driver. Then connect the driver to the pigtail. Finally, tap the pigtail wires to the factory wiring harness. See Wiring Method Diagram below. **The black wire must be grounded before any function will work.**



**IMPORTANT: DO NOT** plug the LED panel directly into pigtail without the driver. The LEDs must be plugged into driver first to control the power.



Headlight Connector



Turn Signal Connector

DD WIRE	PIN	HARNES LOCATION	DRIVER WIRE	PASSENGER WIRE
RED	PIN 8 - PARKING/DRL	HEADLIGHT	GRAY/BLUE	BLUE/BROWN
WHITE	PIN 1 - LOW BEAM	HEADLIGHT	YELLOW	YELLOW
BLACK	PIN 2 - GROUND	HEADLIGHT	BLACK	BLACK
YELLOW	PIN 1 - TURN SIGNAL	TURN SIGNAL	BLUE/WHITE	GREEN/VIOLET

10. Mount driver and tuck all wires. **Driver should be mounted outside of headlight for serviceability, in a location away from the engine block to avoid excessive heat buildup.**

11. Test thoroughly and reinstall onto vehicle.

**This installation guide is for the following SKUs:**

DD2219 Camaro 2016 SB DRL Boards

### 2016 - 2018 Chevrolet Camaro Switchback LED Board Installation Guide



Thank you for your purchase of this unique product for your Chevrolet Camaro! With these modules, you will be able to add a brilliant amber turn signal, along with white daytime running light. They are a direct replacement for the factory LED panels inside the light.



**Please note:** Headlights must be opened before proceeding with installation. Before baking the headlight, remove the T20 torx screws holding the ballast to the housing and the three T20 torx screws holding the LED driver to the housing. Disconnect the OEM harness from ballast. Professional installation is strongly recommended. Please contact Diode Dynamics if you need assistance locating an installer.

**Tools Needed:** Torx T10 and T20 Screwdriver

# DIODE DYNAMICS

## 2016 - 2018 Chevrolet Camaro

### Switchback LED Board Installation Guide



1. Remove the six T20 torx screws holding the black bezel in place, including the screw on the backside of the housing. Set the bezel aside.

Remove the four T20 torx screws holding the white optics shroud in place and remove the optics shroud from the assembly.



2. Remove the four T10 torx screws holding the factory boards in place. Then remove the factory boards. They won't be reused.



3. Install your new Diode Dynamics LED boards. To do so, install the supplied spacers between the boards and the back of the optics shroud as shown in the picture to the left. The spacers must be used in order to allow enough clearance for the LED chips.

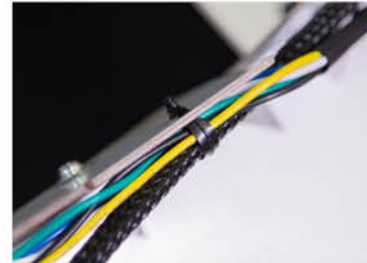


4. Secure the boards in place using the original T10 torx screws.

# DIODE DYNAMICS

## 2016 - 2018 Chevrolet Camaro

### Switchback LED Board Installation Guide



5. Connect the wiring harness to the LED boards. Ensure the shortest length on the wiring harness is connected to the L1/R1 boards.

Secure the wiring harness to the back of the board using the included zip ties. See picture to the left.



6. Using the original T20 screws, reinstall the white optics shroud and route the wires through the back of the headlight assembly, sealing any holes you may create.



7. Using the original T20 screws, reinstall the black bezel in the headlight assembly.



8. Once complete, repeat the same process for other headlight.

*See back for further instructions.*