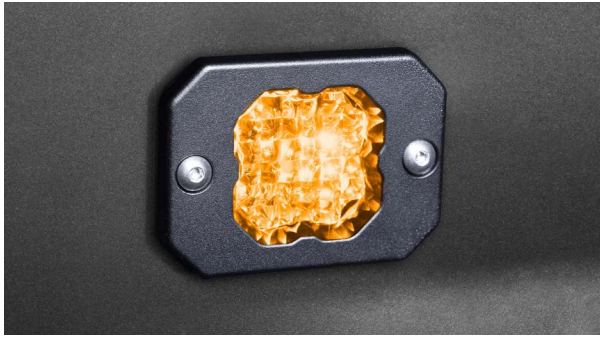


SSC1 Pro White Flush LED Pod



FEATURES

STAGE
SERIES



- Allows for flush installation with truck bumpers, truck beds, and anywhere else you can think of
- High intensity LED chip
- Backlighting available in white, amber, red, and blue
- Durable powdercoated aluminum construction
- Integrated Deutsch-style connector

GENERAL SPECIFICATIONS

Optic	Peak Beam Intensity (Candela)	Illuminance (lux @10m)	Measured Output (Lumens)	Raw Output (Lumens)	Output Color
Flood	925 cd	9 lux	2,300 lm	2,375 lm	6000K White

Functions: White Output with White, Amber, Red, or Blue Backlight

Voltage Range: 9-16V

Current Draw (amps @ 12.8V): 1.7A (output), 24mA (backlight)

Wattage: 21.9W (output), 0.3W (backlight)

Connector Type: 4 Pin DT Connector

Driver Type: Integrated Driver

LED Type/Count: Cree XHP50 6000K/1 total, 3014/3 total

Compliance Rating: J575 Durability Test

Intrusion Rating: IP67 Weatherproof

Operating Temperature: -40°C to 85°C

What's Included:

- One (1) or Two (2) SSC1 Flush LED Pods
- One (1) or Two (2) Deutsch-style wire pigtails
- One (1) or Two (2) Flush Frame gaskets
- Mounting hardware and drilling template

Dimensions & Weight:

Length: 7.5" **Width:** 4.5" **Height:** 3"

Weight: 0.7 lbs (single), 1.2 lbs (pair)

SKUs: Append "S" to the end of each SKU for single and "P" for pair

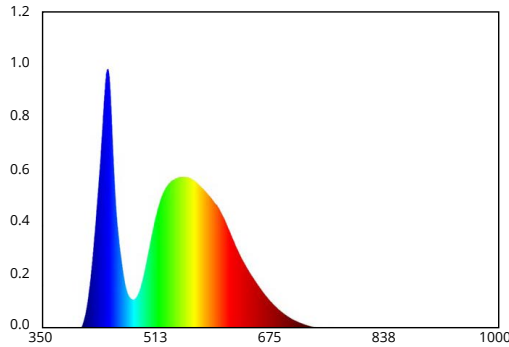
DD6474 SSC1 Pro White Flood Flush WBL
DD6475 SSC1 Pro White Flood Flush ABL
DD6476 SSC1 Pro White Flood Flush RBL
DD6477 SSC1 Pro White Flood Flush BBL

All data and specifications are nominal values and may vary.

PUBLISHED: 1-10-2022

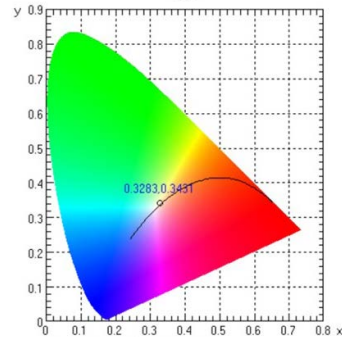
COLORIMETRIC SPECIFICATIONS

WHITE MAIN BEAM



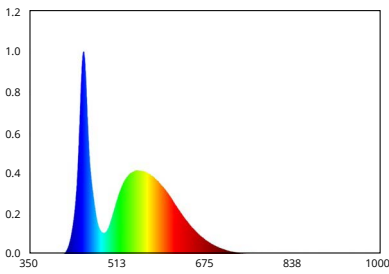
Spectral Distribution

CHROMATICITY



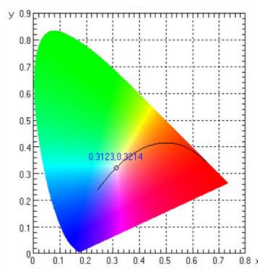
X=0.3283, Y=0.3431

WHITE BACKLIGHT



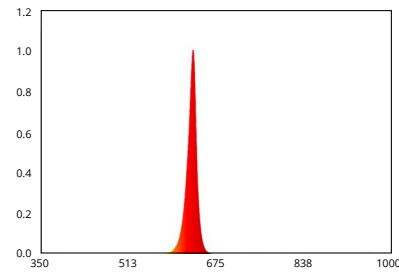
Spectral Distribution

CHROMATICITY



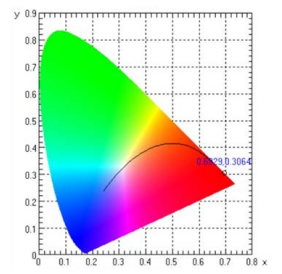
X=0.3123, Y=0.3214

RED BACKLIGHT



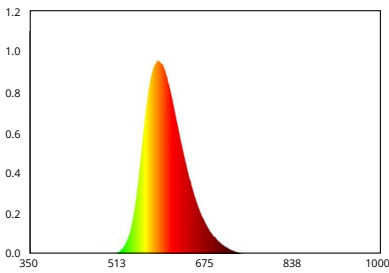
Spectral Distribution

CHROMATICITY



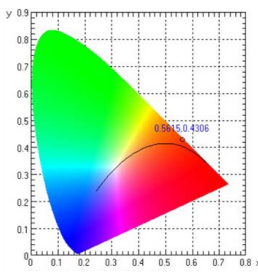
X=0.6929, Y=0.3064

AMBER BACKLIGHT



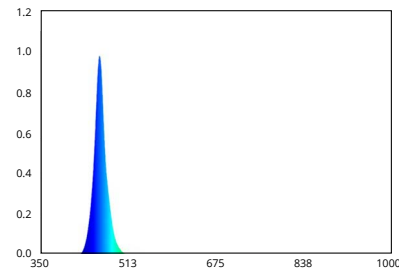
Spectral Distribution

CHROMATICITY



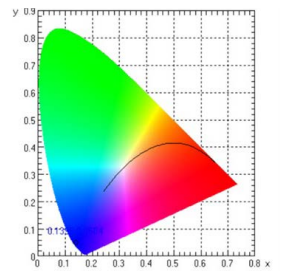
X=0.5615, Y=0.4306

BLUE BACKLIGHT



Spectral Distribution

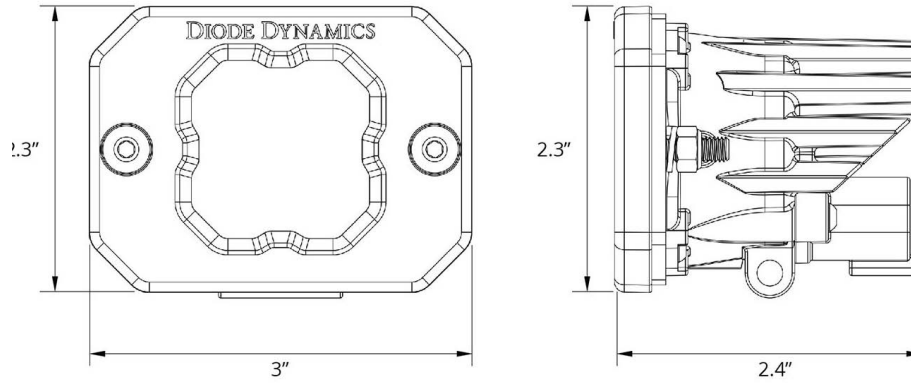
CHROMATICITY



X=0.1395, Y=0.0504

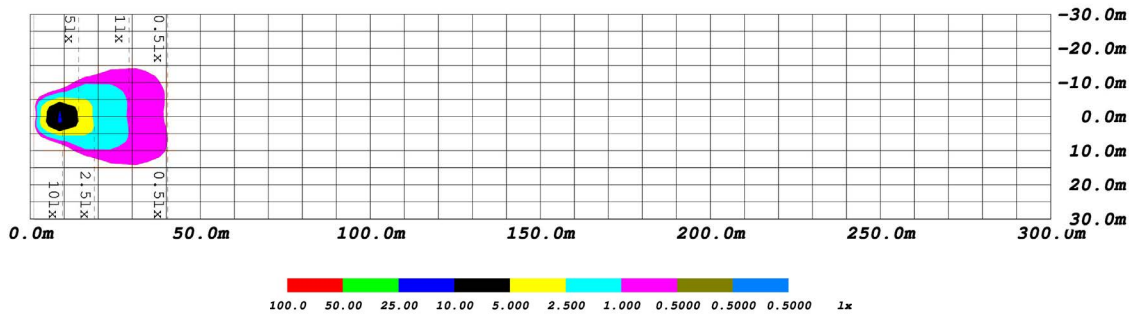
PUBLISHED: 1-10-2022

PRODUCT DIMENSIONS

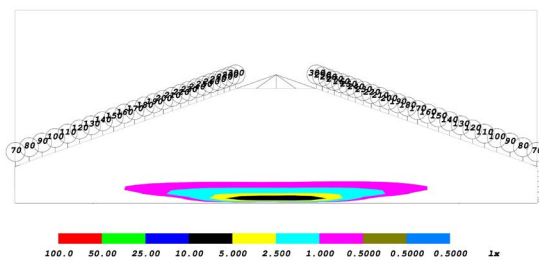


PHOTOMETRIC SPECIFICATIONS

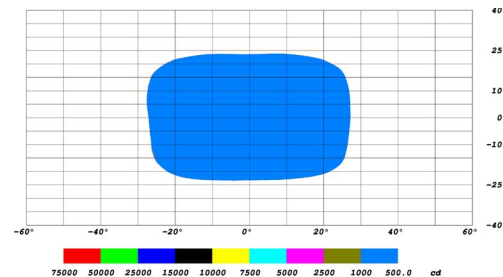
Flood Optic Isolux



Flood Optic Perspective



Flood Optic Isocandela



PUBLISHED: 1-10-2022