

# Stage Series 3" Sport White Angled LED Pod



## FEATURES



- Advanced TIR optics provide high efficiency and focus
- High-intensity automotive-type LEDs
- Pin-fin heatsink design, for superior thermal dissipation
- Integrated Deutsch-style connector
- Durable powdercoated aluminum construction
- Designed, torture tested and assembled in USA

## GENERAL SPECIFICATIONS

Optic	Peak Beam Intensity (Candela)	Illuminance (lux @10m)	Measured Output (Lumens)	Raw Output (Lumens)	Output Color
Driving	54,700 cd	547 lux	1,520 lm	2,262 lm	6000K White
Fog	10,600 cd	106 lux	1,520 lm	2,262 lm	6000K White

**Functions:** White Output

**Voltage Range:** 9-16V

**Current Draw (amps @ 12.8V):** 1.1A

**Wattage:** 14.5W

**Connector Type:** Deutsch DT Connector

**Driver Type:** Integrated Driver

**LED Type/Count:** Luxeon Z ES/4 total

**Compliance Rating:** J575 Durability Test, SAE-F J583, SAE-Y J581

**Intrusion Rating:** IP69K Waterproof, High Pressure

**Operating Temperature:** -40°C to 85°C

### What's Included:

- One (1) or Two (2) Stage Series 3" LED Pods
- One (1) or Two (2) Deutsch-style wire pigtails
- One (1) or Two (2) Mounting brackets and hardware

### Dimensions & Weight:

**Length:** 14.5" **Width:** 10" **Height:** 5"

**Weight:** 2.5 lbs (single), 3.5 lbs (pair)

SKUs: Append "S" to the end of each SKU for single and "P" for pair

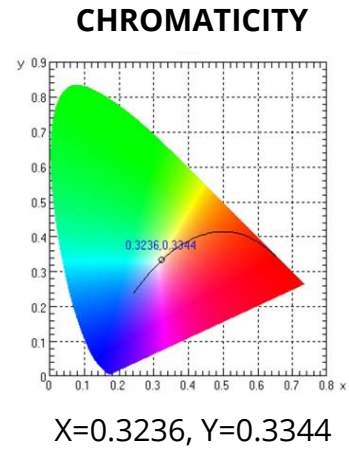
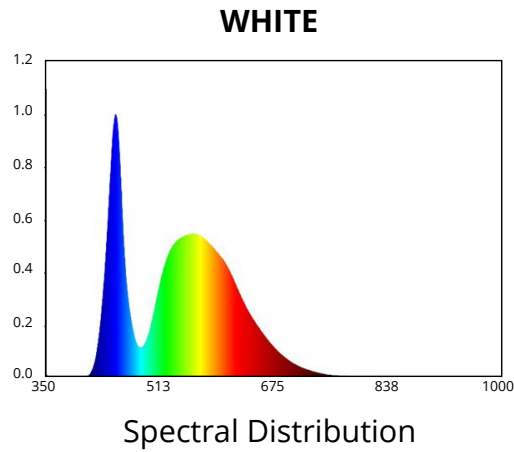
DD6152 Stage Series 3" Sport White Driving Angled

DD6155 Stage Series 3" Sport White Fog Angled

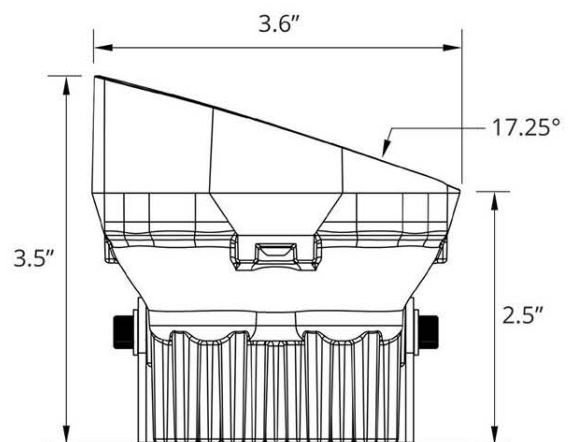
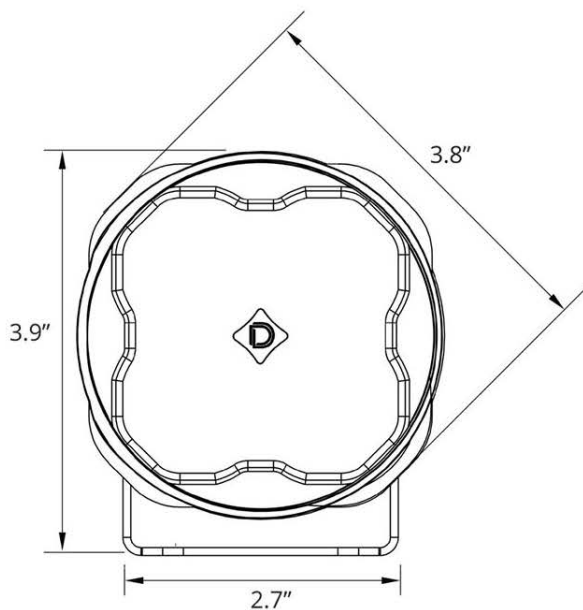
All data and specifications are nominal values and may vary.

PUBLISHED: 2-24-2021

## COLORIMETRIC SPECIFICATIONS



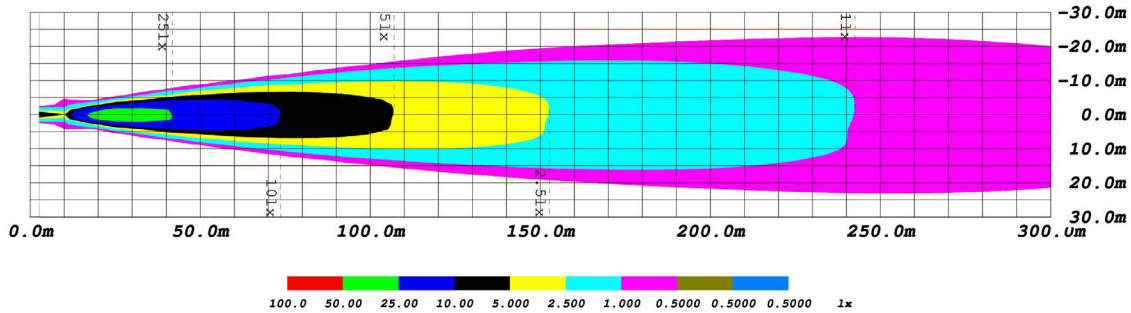
## PRODUCT DIMENSIONS



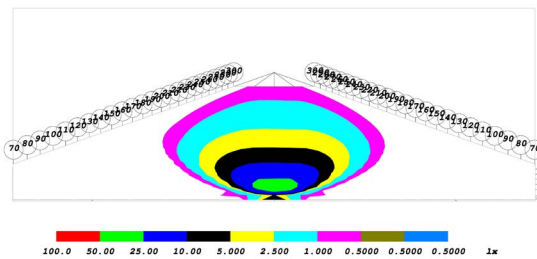
PUBLISHED: 2-24-2021

PHOTOMETRIC SPECIFICATIONS

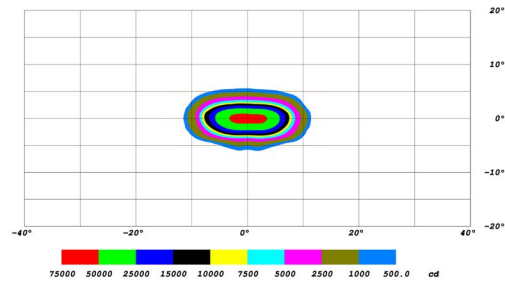
Driving Optic Isolux



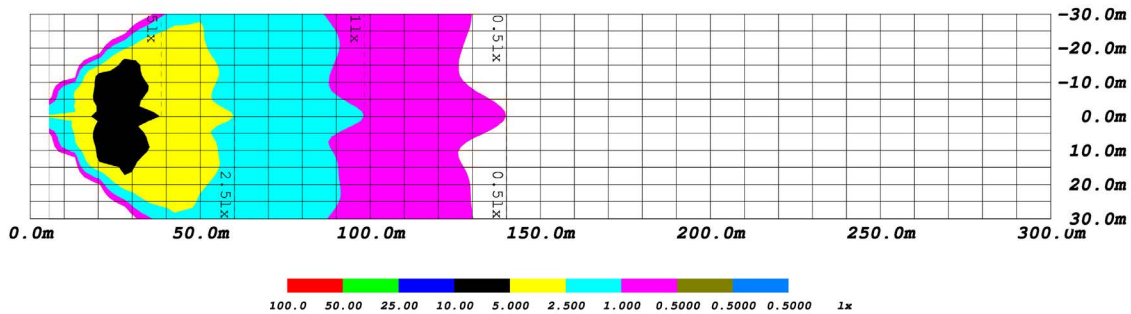
Driving Optic Perspective



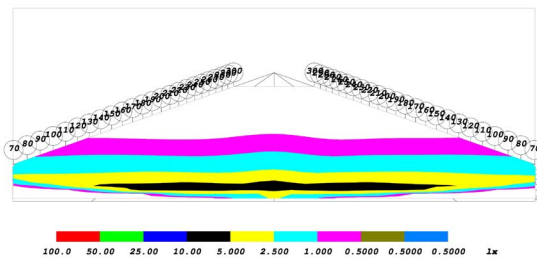
Driving Optic Isocandela



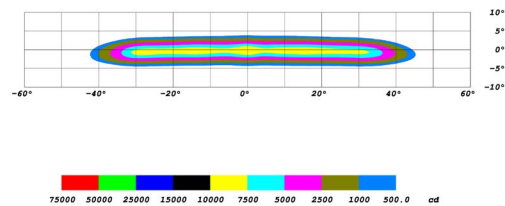
Fog Optic Isolux



Fog Optic Perspective



Fog Optic Isocandela



PUBLISHED: 2-24-2021